



# THE THOMPSON | CVE HOMES

1470 Sq. Ft.

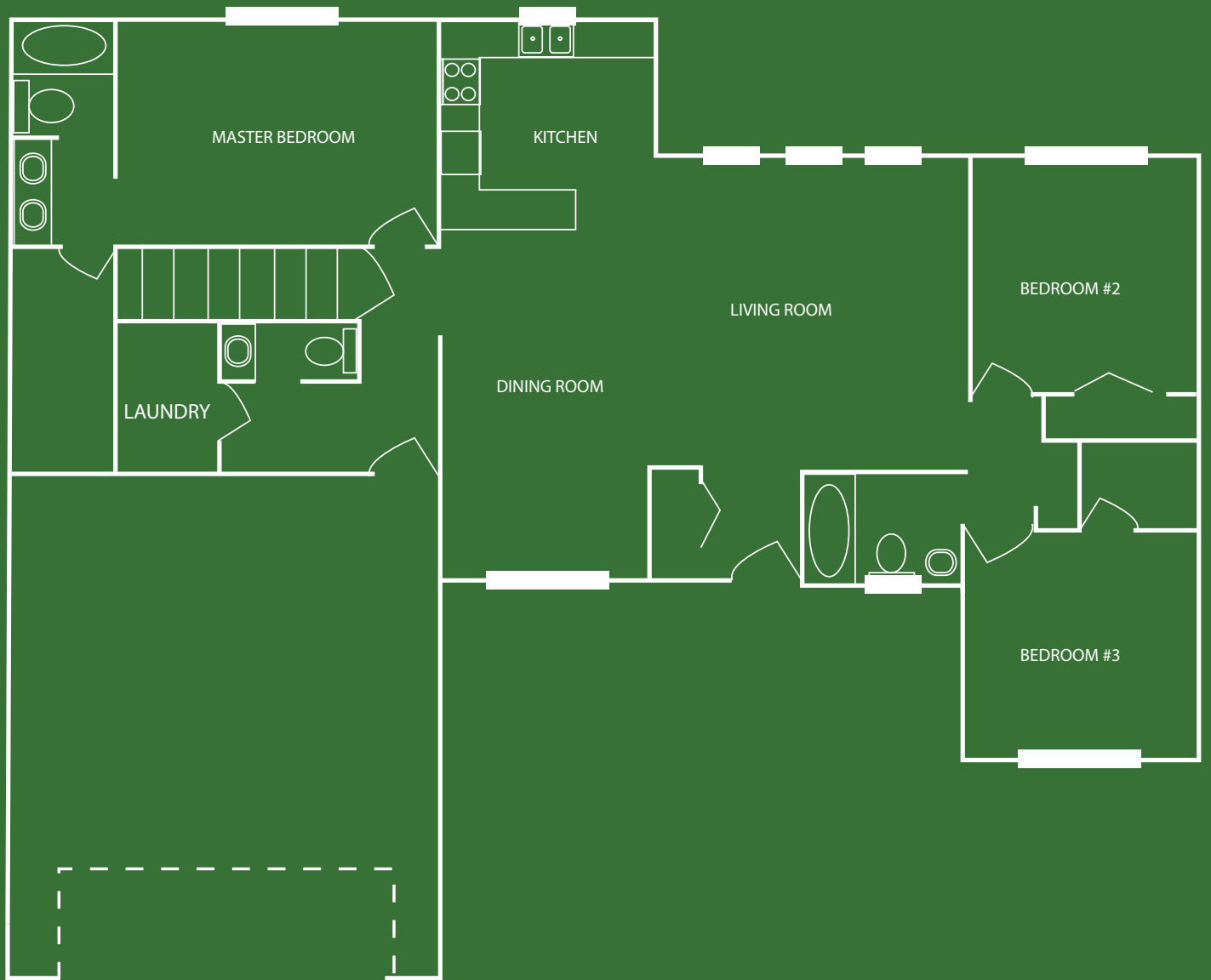
3 Bedroom

2 Bath

Master Suite

Open Floor Plan

Gourmet Kitchen



# The Thompson

CVE is proud to introduce the "Thompson".

With 1470 sq.ft. of living space, an open floor plan, gourmet kitchen with breakfast bar, first floor laundry, designated mudroom, split bedrooms and master suite complete with walk-in closet, this home has it all.



## CVE Homes

[CVEHOMES.COM](http://CVEHOMES.COM)

517.402.6544